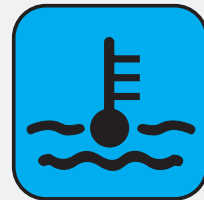


PRODUCT SPECIFICATION SHEET



PowerFlush® II & PowerFlush® III Vacuum Coolant Exchange Machines



2 and 3-Tube Designs for Quick and Easy Vacuum Coolant Exchange Services

- Vacuum removal of old coolant and refill with new coolant.
- Easy to use single service hose attaches directly to the radiator or pressurized coolant reservoir.
- No disconnection of radiator hoses or quick-connect fittings.
- Machine generates vacuum via shop air.
- Eliminates air during the refilling process.
- Very fast, easy and visual coolant exchanges.

Optional Complete Cooling System Flush Capability

- Utilizing traditional upper radiator hose adapters (not included).
- Provides a complete visual pressurized coolant exchange.

PowerFlush II (2-Tube) Vacuum Coolant Exchanger #07804

Machine Specifications

Height.....	58 in.
Width.....	21 in.
Depth.....	29 in.
Weight.....	87 lbs.
Powered by Shop Air	

PowerFlush III (3-Tube) Vacuum Coolant Exchanger #07805

Machine Specifications

Height.....	58 in.
Width.....	21 in.
Depth.....	29 in.
Weight.....	108 lbs.
Powered by Shop Air	



WYNN'S 1050 West Fifth Street • Azusa, CA 91702
A Division of Illinois Tool Works Inc.

626-334-0231
www.wynnsusa.com



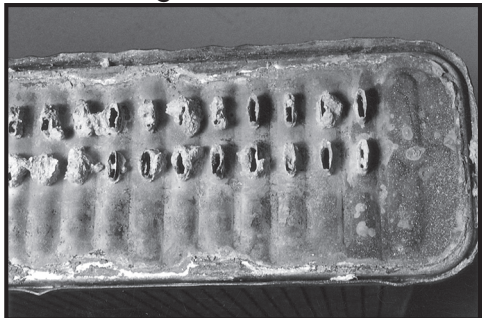
Wynn's® PowerFlush® II & PowerFlush® III Vacuum Coolant Exchange Machines

THE PROBLEM

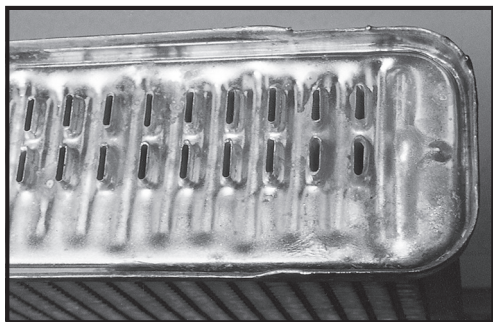
Coolant degrades over time and loses its effectiveness in preventing rust, corrosion and deposit build-up in the cooling system. This can lead to overheating or even premature failure of cooling system components. As such, Original Equipment Manufacturers (OEM's) recommend periodic replacement of engine coolant, with such services often being relatively tedious and time consuming. In addition, many coolant exchange machines require accessing the cooling system by removing or even cutting a radiator or heater hose, followed by connecting various adapters to the hose or radiator, and attaching the service hoses from the machine to the adapters.

Customers want automotive maintenance services to be convenient and fast. Service providers want fast, easy to perform and profitable maintenance services. Some service providers also want the option to perform traditional pressurized coolant exchanges as well as faster and easier vacuum coolant exchanges. It is often difficult to satisfy all of these needs with a single coolant exchange machine.

Neglected Radiator



Well Maintained Radiator



THE SOLUTION

The Wynn's® PowerFlush® II (#07804) and PowerFlush® III (#07805) vacuum coolant exchange machines perform fast and easy vacuum coolant exchanges. The machines each utilize a single service hose, which contains a conical rubber adapter that friction fits into the radiator neck opening or the pressurized overflow reservoir opening. No disconnecting of radiator hoses or attachment of cooling system adapters or quick-connect fittings is necessary. No electrical connections to the machine are necessary.

A shop air connection to the machine is used to generate vacuum via an on-board venturi. Vacuum is first generated in the used coolant tube of the machine to draw coolant from the vehicle through the single service hose. Once the used coolant has been removed from the vehicle, the vacuum created in the vehicle's cooling system is used to draw fresh coolant back into the vehicle. The same amount of used coolant that was removed from the vehicle is automatically replaced with new coolant using this vacuum exchange method.

Wynn's Radiator Flush product is introduced into the vehicle's cooling system either by pouring it into the radiator or pressurized overflow or by mixing it with water in one of the machine's vacuum tubes and using the machine to dispense it into the cooling system. This mixture is then allowed to circulate through the vehicle's cooling system with the engine on to remove the various deposits in the system. Following the coolant exchange, Wynn's Radiator Sealant is added to help prevent cooling system leaks and provide water pump lubrication.

Wynn's PowerFlush II and PowerFlush III Coolant Exchange Machines also have the capability to perform more traditional coolant exchanges (adapters to be ordered separately). By removing the upper radiator hose connection to the radiator and attaching an upper radiator hose adapter set, the machines can be used to perform a complete coolant exchange by pushing new coolant from the machine into the cooling system under pressure, which pushes the old coolant into the machine. This method results in a more complete coolant exchange than using the vacuum exchange method.

Wynn's PowerFlush II and PowerFlush III Coolant Exchange Machines are the ideal choice for shops looking for a single machine that can perform both vacuum coolant exchanges via the radiator or pressurized coolant reservoir and traditional pressurized coolant exchanges via an upper radiator hose connection.



CERTIFICATE #A3958

Product No. 07804 & 07805

WYNN'S

Azusa, California 91702

© 2005 Illinois Tool Works Inc.

www.wynnsusa.com

01/04

Item No. 9M4275